



**DELL** Technologies

OPTIPLEX

**3000**

# 立式機型、 小機型與 Micro 機型

兼具必備效能與智慧設計的  
商用桌上型電腦



# OPTIPLEX 3000

## 與您生活息息相關的科技

專為商用需求打造，結合必備效能、可管理性選項及永續設計，隨時創造更多價值。

規格表

...

### 效能主宰，創造卓越

搭載第 12 代 Intel® Core™ 處理器，功率最高 65W，更內建全新 Hybrid Core 技術 (Celeron – i5 適用直立式和小機型；Celeron – i7 適用 Micro 機型)。

### 通風前邊框

最佳化進氣口，讓您的系統保持涼爽並受到保護。

...

### Wi-Fi6 選項

跟上業界快速的步伐，讓您的 IT 團隊即時因應未來需求。<sup>1</sup>

.....

### 自信工作

OptiPlex 採用 TPM 2.0、標準安全鎖插槽、鎖孔、防盜開關、SED 硬碟和安全配件，全面保障電腦安全。

...

### 記憶體大躍進

最高 64 GB DDR4 記憶體，輕鬆執行多工任務，生產力更勝一籌。

...

### 原生支援多達 4 部顯示器

無須搭載額外的顯示卡。

...

### 視覺效果再強化

選配的 DisplayPort 可支援高達 8K 解析度的顯示器，實現更佳的調色效果和動態畫面穩定。



.....

### 富含永續概念的 OptiPlex

使用高達 60% 的回收材料<sup>2</sup>，及第一個使用回收海漂塑膠的桌上型電腦<sup>3</sup>。特定機型配置符合 EPEAT 金級認證和 ENERGY STAR 認證。

.....

### 多樣化的客製化配件

包含所有全新 Micro 機型支架。



# 3000

## OptiPlex 注重環境永續的理念

OptiPlex 是永續創新的頂尖平台，設計的回收材料使用率為所有 Dell 電腦中最高，其中回收塑膠和封閉式回收材料高達 60%。



### 設計

## 第一款

OptiPlex 是 2007 年第一款使用回收材料製成的 Dell 產品。<sup>4</sup>

### 永續材料

## 60%

OptiPlex 桌上型電腦內含高達 60% 的回收和封閉式回收材料。

### 創新包裝

## 87%

Dell 的包裝有 87% 由回收或可再生材料製成。

## OPTIPLEX 擁有

## 100 種以上

EPEAT 註冊產品\*

## 40 種以上

TCO 認證組態

## 8.0

ENERGY STAR® 涵蓋全產品組合





## 推薦配件



**DELL 24 吋顯示器 - P2422H**

這款時尚的 23.5 吋 FHD 顯示器配備 ComfortView Plus，讓您無論在何處工作，都能保持高效。



**Dell Pro 無線鍵盤與滑鼠 - KM5221W**

全尺寸靜音鍵盤和滑鼠組合，透過可設定的快速鍵和最高 36 個月電池續航力，大幅提升您的日常生產力。



**Dell 專業立體聲耳機 - WH3022**

這款 Teams 認證的有線耳機，可自行調整位置，讓您體驗絕佳的音訊清晰度。



**Dell Slim Conferencing Soundbar - SB522A**

這款智慧長條形喇叭通過 MS Teams 認證，可提供清晰的會議和背景降噪體驗。



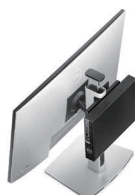
**OptiPlex 立式機型和小機型纜線蓋**

經過散熱測試的設計，提供易於安裝且實用的方式來管理纜線和保護連接埠。



**OptiPlex 小機型多合一底座 - OSS21**

透過整合式纜線管理功能，可全方位調整顯示器，讓您擁有整潔的小機型工作空間。



**OptiPlex Micro 機型多合一底座 - MFS22**

可調整的精巧 Micro 機型底座，使用極少的纜線打造整潔、開放的工作空間。



**OptiPlex Micro 機型雙 VESA 支架 (含轉接架)**

多功能 Micro 機型安裝解決方案，非常適合與 Dell MSA20 或 Dell MDA20 顯示器支臂搭配使用。



**適用於 E 系列顯示器的 OptiPlex Micro 機型多合一 VESA 支架 (含延伸底座)**

輕鬆將 Micro 機型電腦安裝到特定的 Dell E 系列顯示器上。





# OPTIPLEX 3000

## FEATURE TECHNICAL SPECIFICATION

**MODEL NUMBER** OptiPlex 3000 Tower

### PROCESSOR OPTIONS<sup>1</sup>

Intel® Celeron® Gold G6900, 4MB cache, 2 cores, 4 threads, up to 3.40GHz, 46W  
Intel® Pentium® Gold G7400, 6MB cache, 2 cores, 4 threads, up to 3.70GHz, 46W  
12th Generation Intel® Core™ i3-12100, 12MB cache, 4 cores, 8 threads, 3.30GHz to 4.30GHz, 60W  
12th Generation Intel® Core™ i3-12300, 12MB cache, 4 cores, 8 threads, 3.50GHz to 4.40GHz, 60W  
12th Generation Intel® Core™ i5-12400, 18MB cache, 6 cores, 12 threads, 2.50GHz to 4.40GHz, 65W  
12th Generation Intel® Core™ i5-12500, 18MB cache, 6 cores, 12 threads, 3.00GHz to 4.60GHz, 65W  
12th Generation Intel® Core™ i5-12600, 18MB cache, 6 cores, 12 threads, 3.30GHz to 4.80GHz, 65W

### OPERATING SYSTEM<sup>1</sup>

Windows 11 Home, 64-bit  
Windows 11 Pro, 64-bit  
Windows 11 Downgrade (Windows 10 image)  
Windows 11 Pro National Education, 64-bit  
Windows 11 CMIT Government Edition, 64-bit (China only)  
Kylin Linux® Desktop version 10.1 (China only)  
Ubuntu® Linux® 20.04 LTS, 64-bit

### MEMORY OPTIONS<sup>1,2,3</sup>

4GB, 1 x 4GB, DDR4, 3200MHz, single-channel  
8GB, 1 x 8GB, DDR4, 3200MHz, single-channel  
8GB, 2 x 4GB, DDR4, 3200MHz, dual-channel  
16GB, 1 x 16GB, DDR4, 3200MHz, single-channel  
16GB, 2 x 8GB, DDR4, 3200MHz, dual-channel  
32GB, 1 x 32GB, DDR4, 3200MHz, single-channel  
32GB, 2 x 16GB, DDR4, 3200MHz, dual-channel  
64GB, 2 x 32GB, DDR4, 3200MHz, dual-channel

### PRIMARY HARD DISK DRIVES<sup>1,5</sup>

2.5-inch, 1TB, 5400RPM, SATA, HDD  
2.5-inch, 2TB, 5400RPM, SATA, HDD  
2.5-inch, 500GB, 7200RPM, SATA, HDD  
2.5-inch, 1TB, 7200RPM, SATA, HDD  
2.5-inch, 500GB, 7200RPM, SATA, HDD, Self-Encrypting, Opal 2.0, FIPS  
3.5-inch, 1TB, 7200RPM, SATA, HDD  
3.5-inch, 2TB, 7200RPM, SATA, HDD  
3.5-inch, 4TB, 5400RPM, SATA, HDD  
M.2 2230, 128GB, PCIe NVMe Gen3 x4, SSD, Class 35  
M.2 2230, 512GB, PCIe NVMe Gen3 x4, SSD, Class 35  
M.2 2230, 1TB, PCIe NVMe Gen3 x4, SSD, Class 35  
M.2 2230, 256GB, PCIe NVMe Gen3 x4, SSD, Class 35, Self-Encrypting, Opal 2.0, FIPS  
M.2 2280, 256GB, PCIe NVMe Gen3 x4, SSD, Class 40  
M.2 2280, 512GB, PCIe NVMe Gen3 x4, SSD, Class 40  
M.2 2280, 1TB, PCIe NVMe Gen3 x4, SSD, Class 40  
M.2 2280, 2TB, PCIe NVMe Gen3 x4, SSD, Class 40  
M.2 2280, 256GB, PCIe NVMe Gen3 x4, SSD, Class 40, Self-Encrypting, Opal 2.0, FIPS  
M.2 2280, 512GB, PCIe NVMe Gen3 x4, SSD, Class 40, Self-Encrypting, Opal 2.0, FIPS  
M.2 2280, 1TB, PCIe NVMe Gen3 x4, SSD, Class 40, Self-Encrypting, Opal 2.0, FIPS  
M.2 2230, 512GB, PCIe NVMe Gen4 x4, SSD, Class 35  
M.2 2280, 256GB, PCIe NVMe Gen4 x4, SSD, Class 35  
M.2 2280, 256GB, PCIe NVMe Gen4 x4, SSD, Class 40  
M.2 2280, 512GB, PCIe NVMe Gen4 x4, SSD, Class 40

### GRAPHICS

Intel® UHD Graphics 710  
Intel® UHD Graphics 730  
Intel® UHD Graphics 770  
AMD Radeon™ RX640, 4GB GDDR5 (optional)  
AMD Radeon™ 540, 1GB GDDR5 (optional)  
AMD Radeon™ 550, 2GB GDDR5 (optional)

### DISPLAY

Dell commercial displays including E series, Professional P series, UltraSharp, and collaboration monitors

### CASE COLOUR

Dell Standard Black

## TECHNICAL SPECIFICATION

3000 Small Form Factor

Intel® Pentium® Gold G7400, 6MB cache, 2 cores, 4 threads, up to 3.70GHz, 46W  
Intel® Celeron® Gold G6900, 4MB cache, 2 cores, up to 3.40GHz, 46W  
12th Generation Intel® Core™ i3-12100, 12MB cache, 4 cores, 8 threads, 3.30GHz to 4.30GHz, 65W  
12th Generation Intel® Core™ i3-12300, 12MB cache, 4 cores, 8 threads, 3.50GHz to 4.40GHz, 65W  
12th Generation Intel® Core™ i5-12400, 18MB cache, 6 cores, 12 threads, 2.50GHz to 4.80GHz, 65W  
12th Generation Intel® Core™ i5-12500, 18MB cache, 6 cores, 12 threads, 3.00GHz to 4.60GHz, 65W  
12th Generation Intel® Core™ i5-12600, 18MB cache, 6 cores, 12 threads, 3.30GHz to 4.40GHz, 65W

Windows 11 Pro, 64-bit  
Windows 11 Downgrade (Windows 10 image)  
Windows 11 Pro National Education, 64-bit  
Windows 11 CMIT Government Edition, 64-bit (China only)  
Kylin Linux® Desktop version 10.1 (China only)  
Ubuntu® Linux® 20.04 LTS, 64-bit

4GB, 1 x 4GB, DDR4, 3200MHz, single-channel  
8GB, 1 x 8GB, DDR4, 3200MHz, single-channel  
8GB, 2 x 4GB, DDR4, 3200MHz, dual-channel  
16GB, 1 x 16GB, DDR4, 3200MHz, single-channel  
16GB, 2 x 8GB, DDR4, 3200MHz, dual-channel  
32GB, 1 x 32GB, DDR4, 3200MHz, single-channel  
32GB, 2 x 16GB, DDR4, 3200MHz, dual-channel  
64GB, 2 x 32GB, DDR4, 3200MHz, dual-channel

3.5-inch, 4TB, 5400RPM, SATA, HDD  
3.5-inch, 1TB, 7200RPM, SATA, HDD  
3.5-inch, 2TB, 7200RPM, SATA, HDD  
2.5-inch, 500GB, 7200RPM, SATA, HDD, Self-Encrypting Opal 2.0, FIPS  
2.5-inch, 500GB, 7200RPM, SATA, HDD  
2.5-inch, 1TB, 7200RPM, SATA, HDD  
M.2 2230, 128GB, PCIe NVMe Gen3 x4, SSD, Class 35  
M.2 2230, 256GB, PCIe NVMe Gen3 x4, SSD, Class 35  
M.2 2230, 512GB, PCIe NVMe Gen3 x4, SSD, Class 35  
M.2 2230, 512GB, PCIe NVMe Gen4 x4, SSD, Class 35  
M.2 2230, 256GB, PCIe NVMe Gen3 x4, SSD, Class 35, Self-Encrypting Opal 2.0, FIPS  
M.2 2280, 256GB, PCIe NVMe Gen3 x4, SSD, Class 40  
M.2 2280, 512GB, PCIe NVMe Gen3 x4, SSD, Class 40  
M.2 2280, 1TB, PCIe NVMe Gen3 x4, SSD, Class 40  
M.2 2280, 2TB, PCIe NVMe Gen3 x4, SSD, Class 40  
M.2 2280, 256GB, PCIe NVMe Gen4 x4, SSD, Class 40  
M.2 2280, 512GB, PCIe NVMe Gen4 x4, SSD, Class 40  
M.2 2280, 256GB, PCIe NVMe Gen3 x4, SSD, Class 40, Self-Encrypting Opal 2.0, FIPS  
M.2 2280, 512GB, PCIe NVMe Gen3 x4, SSD, Class 40, Self-Encrypting Opal 2.0, FIPS  
M.2 2280, 1TB, PCIe NVMe Gen3 x4, SSD, Class 40, Self-Encrypting Opal 2.0, FIPS  
M.2 2280, 1TB, PCIe NVMe Gen3 x4, SSD, Class 40, Self-Encrypting Opal 2.0, FIPS

Intel® UHD Graphics 710  
Intel® UHD Graphics 730  
Intel® UHD Graphics 770  
AMD Radeon™ RX 640, 4GB GDDR5 (optional)  
AMD Radeon™ 540, 1GB GDDR5 (optional)  
AMD Radeon™ 550, 2GB GDDR5 (optional)

Dell commercial displays including E series, Professional P series, UltraSharp, and Collaboration monitors

Dell Standard Black

## TECHNICAL SPECIFICATION

3000 Micro

Intel® Pentium® G7400T, 6MB, 2 core, 4 threads, up to 3.10GHz, 35W  
Intel® Celeron® G6900T, 4MB, 2 cores, 2 threads, up to 2.80GHz, 35W  
12th Generation Intel® Core™ i3-12100T, 12MB cache, 4 cores, 8 threads, 2.20GHz to 4.10GHz, 35W  
12th Generation Intel® Core™ i3-12300T, 12MB cache, 4 cores, 8 threads, 2.30GHz to 4.20GHz, 35W  
12th Generation Intel® Core™ i5-12400T, 18MB cache, 6 cores, 12 threads, 1.80GHz to 4.20GHz, 35W  
12th Generation Intel® Core™ i5-12500T, 18MB cache, 6 cores, 12 threads, 2.00GHz to 4.40GHz, 35W  
12th Generation Intel® Core™ i5-12600T, 18MB cache, 6 cores, 12 threads, 2.10GHz to 4.60GHz, 35W  
12th Generation Intel® Core™ i7-12700T, 25MB cache, 12 cores, 20 threads, 1.40GHz to 4.70GHz, 35W

Windows 11 Home, 64-bit  
Windows 11 Pro, 64-bit  
Windows 11 Downgrade (Windows 10 image)  
Windows 11 Pro Education, 64-bit  
Windows 11 CMIT Government Edition, 64-bit (China only)  
Kylin Linux® Desktop version 10.1 (China only)  
Ubuntu® Linux® 20.04 LTS, 64-bit

4GB, 1 x 4GB, DDR4, 3200MHz, single-channel  
8GB, 1 x 8GB, DDR4, 3200MHz, single-channel  
8GB, 2 x 4GB, DDR4, 3200MHz, dual-channel  
16GB, 1 x 16GB, DDR4, 3200MHz, single-channel  
16GB, 2 x 8GB, DDR4, 3200MHz, dual-channel  
32GB, 1 x 32GB, DDR4, 3200MHz, single-channel  
32GB, 2 x 16GB, DDR4, 3200MHz, dual-channel  
64GB, 2 x 32GB, DDR4, 3200MHz, dual-channel

2.5-inch, 1TB, 5400RPM, SATA, HDD  
2.5-inch, 2TB, 5400RPM, SATA, HDD  
2.5-inch, 500GB, 7200RPM, SATA, HDD  
2.5-inch, 1TB, 7200RPM, SATA, HDD  
2.5-inch, 500GB, 7200RPM, SATA, HDD, Self-Encrypting, Opal 2.0, FIPS  
M.2 2230, 256GB, PCIe NVMe Gen3 x4, SSD, Class 35  
M.2 2230, 512GB, PCIe NVMe Gen3 x4, SSD, Class 35  
M.2 2280, 512GB, PCIe NVMe Gen3 x4, SSD, Class 40  
M.2 2280, 1TB, PCIe NVMe Gen3 x4, SSD, Class 40  
M.2 2280, 2TB, PCIe NVMe Gen3 x4, SSD, Class 40

N/A

Dell commercial displays including E series, Professional P series, UltraSharp, and Collaboration monitors

Dell Standard Black

# OPTIPLEX 3000

FEATURE	TECHNICAL SPECIFICATION	TECHNICAL SPECIFICATION	TECHNICAL SPECIFICATION
<b>MODEL NUMBER</b>	OptiPlex 3000 Tower	3000 Small Form Factor	3000 Micro
<b>PRODUCTIVITY SOFTWARE<sup>1</sup></b>	Microsoft Office 30-day trial Microsoft Office Home and Business 2019 Microsoft Office Professional 2019 Dell Hybrid Client 1.5 (optional) Intel Unite solution (optional)	Microsoft Office 30-day trial Microsoft Office Home and Business 2019 Microsoft Office Professional 2019 Dell Hybrid Client 1.5 (optional) Intel Unite solution (optional)	Microsoft Office 30-day trial Microsoft Office Home and Business 2019 Microsoft Office Professional 2019 Dell Hybrid Client 1.5 (optional) Intel Unite solution (optional)
<b>SECURITY SOFTWARE</b>	McAfee® Small Business Security 30-day free trial McAfee® Small Business Security 12-month subscription McAfee® Small Business Security 36-month subscription SafeGuard and Response, powered by VMware Carbon Black and Secureworks Next Generation Antivirus (NGAV) Endpoint Detection and Response (EDR) Threat Detection and Response (TDR) Managed Endpoint Detection and Response Incident Management Retainer Emergency Incident Response SafeData	McAfee® Small Business Security 30-day Free Trial McAfee® Small Business Security 12-month subscription McAfee® Small Business Security 36-month Subscription SafeGuard and Response, powered by VMware Carbon Black and Secureworks Next Generation Antivirus (NGAV) Endpoint Detection and Response (EDR) Threat Detection and Response (TDR) Managed Endpoint Detection and Response Incident Management Retainer Emergency Incident Response	McAfee® Small Business Security 30-day free trial McAfee® Small Business Security 12-month subscription McAfee® Small Business Security 36-month subscription Intel Guard Technologies & Secure Key: Software Guard (SGX), Boot Guard, BIOS Guard (Core CPU's only), OS Guard (Core CPU's only) and Secure Key (i5 or greater only) Intel Runtime BIOS Resilience (Copper Point) with attestation via Nifty Rock + Intel TXT Support of Absolute Persistent Module BIOS agent v2 OpenXT validation required SafeGuard and Response, powered by VMware Carbon Black and Secureworks Next Generation Antivirus (NGAV) Endpoint Detection and Response (EDR) Threat Detection and Response (TDR) Managed Endpoint Detection and Response Incident Management Retainer
<b>WARRANTY<sup>2,10</sup></b>	1-year basic warranty with hardware service on-site service after remote diagnosis 2-year basic warranty extension 3-year basic warranty extension 4-year basic warranty extension 5-year basic warranty extension 1-year ProSupport with Next Business Day on-site service 2-year ProSupport with Next Business Day on-site service 3-year ProSupport with Next Business Day on-site service 4-year ProSupport with Next Business Day on-site service 5-year ProSupport with Next Business Day on-site service 1-year ProSupport Plus for Client with Next Business Day on-site service 2-year ProSupport Plus for Client with Next Business Day on-site service 3-year ProSupport Plus for Client with Next Business Day on-site service 4-year ProSupport Plus for Client with Next Business Day on-site service 5-year ProSupport Plus for Client with Next Business Day on-site service	1-year basic warranty with hardware service on-site service after remote diagnostics 2-year basic warranty extension 3-year basic warranty extension 4-year basic warranty extension 5-year basic warranty extension 1-year ProSupport with Next Business Day on-site service 2-year ProSupport with Next Business Day on-site service 3-year ProSupport with Next Business Day on-site service 4-year ProSupport with Next Business Day on-site service 5-year ProSupport with Next Business Day on-site service 1-year ProSupport Plus for Client with Next Business Day on-site service 2-year ProSupport Plus for Client with Next Business Day on-site service 3-year ProSupport Plus for Client with Next Business Day on-site service 4-year ProSupport Plus for Client with Next Business Day on-site service 5-year ProSupport Plus for Client with Next Business Day on-site service	1-year Basic Warranty with Hardware Service on-site service after remote diagnosis 2-year Basic Warranty Extension 3-year Basic Warranty Extension 4-year Basic Warranty Extension 5-year Basic Warranty Extension 1-year ProSupport with Next Business Day on-site service 2-year ProSupport with Next Business Day on-site service 3-year ProSupport with Next Business Day on-site service 4-year ProSupport with Next Business Day on-site service 5-year ProSupport with Next Business Day on-site service 1-year ProSupport Plus for Client with Next Business Day on-site service 2-year ProSupport Plus for Client with Next Business Day on-site service 3-year ProSupport Plus for Client with Next Business Day on-site service 4-year ProSupport Plus for Client with Next Business Day on-site service 5-year ProSupport Plus for Client with Next Business Day on-site service
<b>ACCIDENTAL DAMAGE SERVICES</b>	1-year Accidental Damage Service 2-year Accidental Damage Service 3-year Accidental Damage Service 4-year Accidental Damage Service 5-year Accidental Damage Service	1-year Accidental Damage Service 2-year Accidental Damage Service 3-year Accidental Damage Service 4-year Accidental Damage Service 5-year Accidental Damage Service	1-year Accidental Damage Service 2-year Accidental Damage Service 3-year Accidental Damage Service 4-year Accidental Damage Service 5-year Accidental Damage Service
<b>KEYBOARD<sup>1</sup></b>	N/A	N/A	N/A
<b>PORTS</b>	<b>Front:</b> (2) USB 2.0 ports (2) USB 3.2 Gen 1 ports Universal audio jack  <b>Rear:</b> (2) USB 3.2 Gen 1 ports (2) USB 2.0 ports with Smart Power On RJ45 Ethernet port DisplayPort 1.4 port HDMI 1.4b port Optional video port (HDMI 2.0b/DisplayPort 1.4/VGA) Serial/PS2 port (optional)	<b>Front:</b> (2) USB 2.0 ports (2) USB 3.2 Gen 1 ports Universal audio jack  <b>Rear:</b> (2) USB 3.2 Gen 1 ports (2) USB 2.0 ports with Smart Power On RJ45 Ethernet port DisplayPort 1.4 port HDMI 1.4b port Optional video port (HDMI 2.0b/DisplayPort 1.4/VGA) Serial port (optional)	<b>Front:</b> (2) USB 3.2 Gen 1 ports Universal audio jack  <b>Rear:</b> (2) USB 3.2 Gen 1 ports USB 2.0 port with Smart Power On USB 2.0 port RJ45 Ethernet port 10/100/1000Mbps DisplayPort 1.4a (HBR2) HDMI port Power adapter port Optional port (HDMI) 2.0b/Displayport 1.4a (HBR3)/VGA/PS2/serial
<b>OPTICAL DRIVE</b>	8x DVD-ROM (optional) 8x DVD+/-RW (optional)	8x DVD RW, Slimline 9.5mm (optional) 8x DVD-ROM, Slimline 9.5mm (optional)	No optical drive
<b>SLOTS</b>	Kensington security-cable slot Padlock ring Full-height Gen 3 PCIe x16 slot (2) full-height Gen 3 PCIe x1 slots M.2 2230 slot for Wi-Fi and Bluetooth card M.2 2230/2280 slot for SSD (3) SATA slots for 3.5-inch/2.5-inch HDD/SSD, and optical Drive	Kensington security-cable slot Padlock ring Half-height Gen 4 PCIe x 16 slot Half-height Gen 3 PCIe x1 slot M.2 2230 slot for WiFi and Bluetooth card M.2 2230/2280 slot for SSD (2) SATA 3.0 slots for 3.5/2.5-inch HDD, and slim optical drive	Kensington security-cable slot Padlock ring M.2 2230 slot for Wi-Fi and Bluetooth card M.2 2230/2280 slot for SSD Gen3 x4 SATA slot for 2.5-inch HDD

# OPTIPLEX 3000

## FEATURE TECHNICAL SPECIFICATION

**MODEL NUMBER** OptiPlex 3000 Tower

### DIMENSIONS

**US:**  
Height: 12.77in. (324.30mm)  
Width: 6.06in. (154.00mm)  
Depth: 11.50in. (292.20mm)  
Weight (minimum): 11.41lbs. (5.17kg)  
Weight (maximum): 14.59lbs. (6.61kg)

**Rest of world:**  
Height: 324.30mm (12.77in.)  
Width: 154.00mm (6.06in.)  
Depth: 292.20mm (11.50in.)  
Weight (minimum): 5.17kg (11.41lbs.)  
Weight (maximum): 6.61kg (14.59lbs.)

### CAMERA

No camera

**AUDIO & SPEAKERS<sup>1</sup>** Realtek Audio Controller, ALC3246-CG

### WIRELESS

Intel® AX211, 2x2, Wi-Fi 6E (WiFi 802.11ax),  
Bluetooth® 5.2  
MediaTek® MT7921, 2x2, Wi-Fi 6 (WiFi 802.11ax),  
Bluetooth® 5.2  
Intel® 9462, 1x1, Wi-Fi 5 (802.11ac), Bluetooth® 5.1

### BATTERY OPTIONS

No battery

### POWER OPTIONS

300W internal power supply unit (PSU), 92%  
Efficient, 80 Plus Platinum  
240W internal power supply unit (PSU), 85%  
Efficient, 80 Plus Bronze  
180W internal power supply unit (PSU), 85% Efficient,  
80 Plus Bronze

### REGULATORY<sup>8,12</sup>

**Product Safety, EMC and Environmental Datasheets:**  
<https://www.dell.com/learn/us/en/uscorp1/productinfo-datasheets-safety-emc-environmental>

**Dell Regulatory Compliance Home Page:**  
<https://www.dell.com/learn/us/en/uscorp1/regulatory-compliance?s=corp>

**Dell and the Environment:**  
<https://corporate.delltechnologies.com/en-us/social-impact/advancing-sustainability/sustainable-supply-chain/environment.htm>

### CHIPSET

Intel® B660

### HARDWARE SECURITY

Kensington security-cable slot  
Padlock loop  
Chassis lock slot support  
Chassis intrusion switch  
Lockable cable covers  
SafeID including Trusted Platform Module (TPM) 2.0  
Smart card keyboard (FIPS)  
Microsoft 10 Device Guard and Credential Guard (Enterprise SKU)  
Microsoft Windows BitLocker  
Local hard drive data wipe through BIOS (Secure Erase)  
Self-encrypting storage drives (Opal, FIPS)  
Trusted Platform Module TPM 2.0  
China TPM  
Intel Secure Boot  
Intel Authenticate  
SafeBIOS: includes Dell Off-host BIOS Verification, BIOS Resilience, BIOS Recovery, and additional BIOS Controls

### RECOMMENDED ACCESSORIES

**Mouse:**  
Dell Pro Wireless Keyboard and Mouse - KM5221W

**Audio and Speakers :**  
Dell Slim Soundbar - SB521A

**Audio Headsets :**  
Dell Pro Stereo Headset - WH3022

## TECHNICAL SPECIFICATION

3000 Small Form Factor

**US:**  
Height: 11.42in. (290.00mm)  
Width: 3.65in. (92.60mm)  
Depth: 11.53in. (292.80mm)  
Weight (minimum): 8.18lbs. (3.71kg)  
Weight (maximum): 11.09lbs. (5.03kg)

**Rest of world:**  
Height: 290.00mm (11.42in.)  
Width: 92.60mm (3.65in.)  
Depth: 292.80mm (11.53in.)  
Weight (minimum): 3.71kg (8.18lbs.)  
Weight (maximum): 5.03kg (11.09lbs.)

No camera

Realtek Audio Controller, ALC3246-CG

Intel® AX211, 2x2, Wi-Fi 6E (WiFi 802.11ax),  
Bluetooth® 5.2  
MediaTek® MT7921, 2x2, Wi-Fi 6 (WiFi 802.11ax),  
Bluetooth® 5.2  
Intel® 9462, 1x1, Wi-Fi 5 (802.11ac), Bluetooth® 5.1

No battery

300W internal power supply unit (PSU), 92%  
Efficient, 80 Plus Platinum  
180W internal power supply unit (PSU), 85% Efficient,  
80 Plus Bronze

**Product Safety, EMC and Environmental Datasheets:**  
<https://www.dell.com/learn/us/en/uscorp1/productinfo-datasheets-safety-emc-environmental>

**Dell Regulatory Compliance Home Page:**  
<https://www.dell.com/learn/us/en/uscorp1/regulatory-compliance?s=corp>

**Dell and the Environment:**  
<https://corporate.delltechnologies.com/en-us/social-impact/advancing-sustainability/sustainable-supply-chain/environment.htm>

Intel® B660

Kensington security-cable slot  
Padlock ring  
Chassis lock slot support  
Chassis intrusion switch  
Lockable cable covers  
SafeID including Trusted Platform Module (TPM) 2.0  
Smart card keyboard (FIPS)  
Microsoft 10 Device Guard and Credential Guard (Enterprise SKU)  
Microsoft Windows BitLocker  
Local hard drive data wipe through BIOS (Secure Erase)  
Self-encrypting storage drives (Opal, FIPS)  
Trusted Platform Module TPM 2.0  
China TPM  
Intel Secure Boot  
Intel Authenticate  
SafeBIOS: includes Dell Off-host BIOS Verification, BIOS Resilience, BIOS Recovery, and additional BIOS Controls

**Mouse:**  
Dell Pro Wireless Keyboard and Mouse - KM5221W

**Audio and Speakers :**  
Dell Slim Soundbar - SB521A

**Audio Headsets :**  
Dell Pro Stereo Headset - WH3022

## TECHNICAL SPECIFICATION

3000 Micro

**US:**  
Height: 7.16in. (182.00mm)  
Width: 1.42in. (36.00mm)  
Depth: 7.00in. (178.00mm)  
Weight: 1.43lbs. (0.65kg)

**Rest of world:**  
Height: 182.00mm (7.16in.)  
Width: 36.00mm (1.42in.)  
Depth: 178.00mm (7.00in.)  
Weight: 0.65kg (1.43lbs.)

No camera

Realtek Audio Controller, ALC3246-CG  
Internal speakers (optional)

Intel® AX211, 2x2, Wi-Fi 6E (WiFi 802.11ax),  
Bluetooth® 5.2  
MediaTek® MT7921, 2x2, Wi-Fi 6 (WiFi 802.11ax),  
Bluetooth® 5.2  
Intel® 9462, 1x1, Wi-Fi 5 (802.11ac), Bluetooth® 5.1

No battery

90W AC adapter, 4.5mm barrel  
65W AC adapter, 4.5mm barrel

**Product Safety, EMC and Environmental Datasheets:**  
<https://www.dell.com/learn/us/en/uscorp1/productinfo-datasheets-safety-emc-environmental>

**Dell Regulatory Compliance Home Page:**  
<https://www.dell.com/learn/us/en/uscorp1/regulatory-compliance?s=corp>

**Dell and the Environment:**  
<https://corporate.delltechnologies.com/en-us/social-impact/advancing-sustainability/sustainable-supply-chain/environment.htm>

Intel® B660

Kensington security-cable slot  
Padlock ring  
Chassis lock slot support  
Chassis intrusion switch  
Supply chain tamper alerts  
SafeID including Trusted Platform Module (TPM) 2.0  
Smart card keyboard (FIPS)  
Microsoft 10 Device Guard and Credential Guard (Enterprise SKU)  
Microsoft Windows BitLocker  
Local hard drive data wipe through BIOS (Secure Erase)  
Self-encrypting storage drives (Opal, FIPS)  
Trusted Platform Module TPM 2.0  
China TPM  
Intel Secure Boot  
Intel Authenticate

**Keyboard and Mouse :**  
Dell Pro Wireless Keyboard and Mouse - KM5221W

**Audio Headsets :**  
Dell Pro Stereo Headset - WH3022

**Mounting Options :**  
OptiPlex Micro and Thin Client Vertical Stand  
OptiPlex Micro and Thin Client and Under-the-Desk VESA mount Wall Mount  
OptiPlex Micro and Thin Client PSU Adapter Sleeve  
OptiPlex Micro and Thin Client Pro 2 E Series Monitor Mount  
OptiPlex Micro and Thin Client Dual VESA Mount  
OptiPlex Micro and Thin Client All-in-One Stand (MFS22)

# OPTIPLEX 3000

FEATURE	TECHNICAL SPECIFICATION	TECHNICAL SPECIFICATION	TECHNICAL SPECIFICATION
MODEL NUMBER	OptiPlex 3000 Tower	3000 Small Form Factor	3000 Micro
SYSTEMS MANAGEMENT	Dell Client Command Suite for In-Band systems management	Dell Client Command Suite for In-Band systems management	Dell Client Command Suite for In-Band systems management
CONFIGURATION SERVICES	N/A	N/A	Factory image load BIOS customization Hardware customization Asset Tagging and Reporting
ADD-IN CARDS	N/A	N/A	N/A

## 產品揭露：第 2 頁至第 4 頁

\* 已註冊 EPEAT (如適用)。EPEAT 註冊標準會因國家/地區而異。如需各國家/地區註冊狀態資訊，請參閱 [www.epeat.net](http://www.epeat.net)。

1 適用於 Windows® 11。

2 根據內部分析結果，2021 年 4 月。

3 根據內部分析結果，2021 年 4 月，僅適用於 OptiPlex Micro 機型。

4 根據內部分析結果，2021 年 4 月。閉迴路回收鋁材料為 2TB 3.5 吋硬碟重量的 20%，此硬碟為 OptiPlex 7090 立式和 7090 小機型的選購件。

## 產品揭露：第 5 頁至第 8 頁

1 產品配置可能因地區而異。產品推出後部分項目可能會提供。完整詳細資訊，請參閱 [www.dell.com/support](http://www.dell.com/support) 上的《技術指南》(Technical Guidebook)。

2 系統記憶體和顯示技術：視系統記憶體大小和其他因素，可能會使用大量系統記憶體來支援顯示卡。

3 系統記憶體容量 4GB 以上：需要 64 位元作業系統才能支援 4GB 以上的系統記憶體。

4 特定版本的 Microsoft Windows 可能不支援完整的 Bluetooth 4.2 功能

5 儲存選項：GB 表示 10 億位元組，TB 則等於 1 兆位元組；實際容量因預載內容和作業環境而異，可能會有所降低。

6 TPM 在特定地區提供。

7 Computrace：非 Dell 方案。特定條件亦適用。如需完整詳細資料，請前往以下網址參閱條款與條件：[www.ijackforlaptops.com](http://www.ijackforlaptops.com)。

8 特定國家/地區的認證等級和參與情況，請參閱 [www.epeat.net](http://www.epeat.net)。

9 有限硬體保固：如需索取有限硬體保固，請寫信至 Dell USA LP，收件人：Warranties, One Dell Way, Round Rock, TX 78682 或參閱 [www.dell.com/warranty](http://www.dell.com/warranty)。

10 遠端診斷後到府維修服務：「遠端診斷」意指由線上/電話技術人員判定問題原因；可能必須由客戶檢查系統內部，並且可能需進行多次或較長時間之診斷。如果問題在有限硬體保固 ([www.dell.com/warranty](http://www.dell.com/warranty)) 涵蓋範圍內，並且無法遠端解決，則通常在完成遠端診斷後的 1 個營業日內，派遣技術人員及/或寄出零件。實際供應狀況可能不同。其他條件亦適用。

11 Dell 服務：Dell 服務的供應情況和條款因地區而異。如需詳細資訊，請瀏覽 [www.dell.com/servicedescriptions](http://www.dell.com/servicedescriptions)。

12 有關聲明和認證的完整列表，請參閱「產品支援」(Product Support) 資訊「手冊」(Manuals) 部分中的 Dell 法規和環境資料表 (Regulatory and Environmental Datasheet)，網址為 [www.dell.com/support/home/us/en/19](http://www.dell.com/support/home/us/en/19)。